

TOTOKU

*Flat Display System
for Medical Imaging*

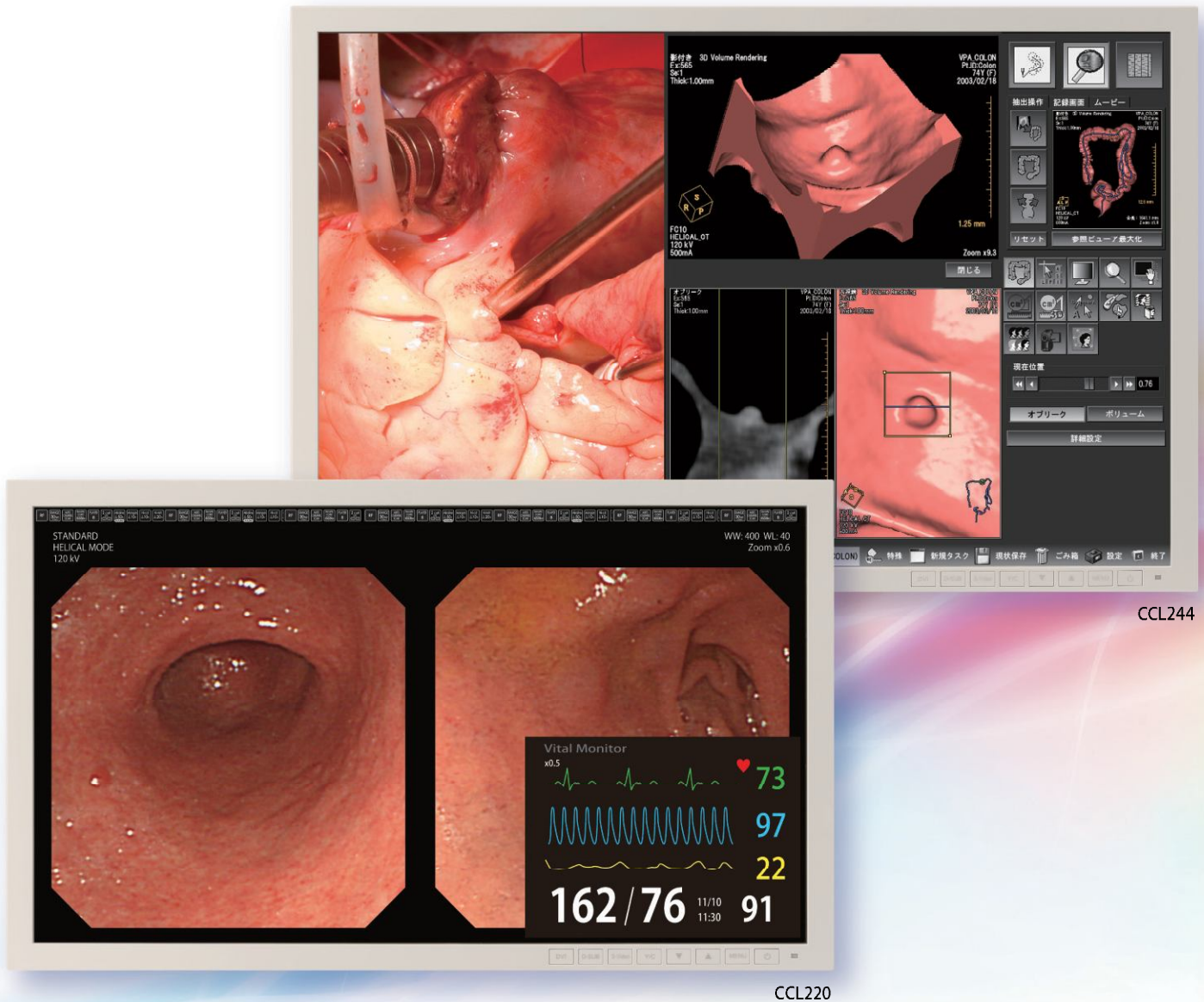
New
21.5" Color Display

CCL220

New
24.1" Color Display

CCL244

CCL Series



*Advanced surgical display for the operating room providing
the most accurate images with full HD capability and LED backlight*

| | | | | | | | | | | |
|--------|-------|--------------------------|--------|------------------|----------------|------------------|-----------------------------|--------------------------|--------------------------|--------------------------|
| CCL220 | 21.5" | 250 cd/m ² | 1000:1 | LED Backlight | Multi Input | Analog Output | Internal Power Supply | Picture in Picture | Picture by Picture | Special AR Coating |
| CCL244 | 24.1" | 300 cd/m ² | 1000:1 | LED Backlight | Multi Input | Analog Output | Internal Power Supply | Picture in Picture | Picture by Picture | Special AR Coating |

Features :

► IPS Panel Technology

IPS panel technology provides high brightness, a wide viewing angle and accuracy in color.

► AR Coating

AR coating technology addresses properties of focus, noise reduction, high contrast and less reflection to produce crisper images.

► Multi-Interface

CCL220 and CCL244 support multiple interfaces including DVI, HDMI, Analog RGB, S-Video, HD-SDI and NTSC/PAL. (DVI and HDMI for input only)

► Multi-Resolution

From VGA 640 x 480 to HDTV 1920 x 1080 (1920 x 1200 with CCL244), a wide variety of signals are supported.

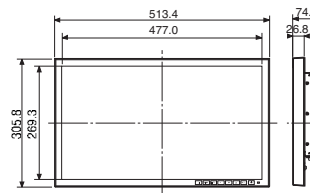
► Picture-in-Picture (PIP), Picture-by-Picture (PbyP)

These features allow two videos/images from multiple signal inputs to be displayed simultaneously so that surgeons can effectively obtain required information.

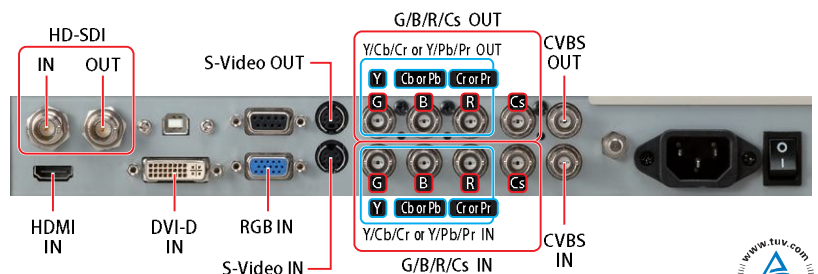
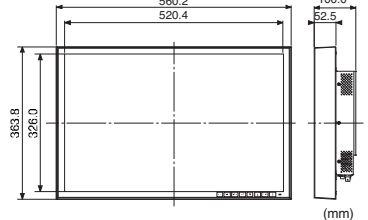
Specifications

| Model Name | CCL220 | CCL244 |
|--------------------|---|---|
| Technology | 21.5-inch, TFT color active matrix IPS technology | 24.1-inch, TFT color active matrix IPS technology |
| Display Area | 475.2 mm x 267.3 mm | 518.4 mm x 324 mm |
| Viewing Angle | 1000:1 (typ) | |
| Maximum Luminance | 250cd/m ² (typ) | 300cd/m ² (typ) |
| Contrast Ratio | 178" vertical and horizontal (Wide view) | |
| Display Colors | 1920 x 1080 | 1920 x 1200 |
| Native Resolution | 256 shades of grayscale are simultaneously displayed from a palette of 1021 grayscale steps | |
| Grayscale | 16.77 million colors from a palette of 1.06 billion colors | |
| Input Signal | DVI, HDMI, D-sub 15 pin--RGB, S-Video, BNC(HD-SDI), BNC(Y • Cb • Cr), BNC(Y • Pb • Pr) BNC(CVBS)--NTSC/PAL, BNC(G • B • R • Cs)--RGBS | |
| Output Signal | S-Video, BNC(HD-SDI), BNC(Y • Cb • Cr), BNC(Y • Pb • Pr) BNC(CVBS)--NTSC/PAL, BNC(G • B • R • Cs)--RGBS | |
| Input Power Supply | Input 100V~240V Maximum Power Consumption 60W (typ) | |
| Features | Picture-in-Picture (PIP), Picture-by-Picture (PbyP) | |
| Approvals | ANSI/AAMI ES60601-1 (2005) + A1 (2012), CAN/CSA-C22.2 No. 60601-1 (2008), CE (EN60601-1, EN60601-1-2), FCC-B, ICES-003-B, VCCI-B, CCC, FDA 510(k) | |
| Dimensions | 513.4(W) x 305.8(H) x 74.3(D)mm | 560.2(W) x 363.8(H) x 100.0(D)mm |
| Weight | About 5.1 kg | About 7.1 kg |
| Mount | VESA mounting 100mm x 100mm | |
| Accessories | Power cord, DVI cable, Users manual | |

CCL220



CCL244



●"TOTOKU" is a brand of medical and industrial displays manufactured and sold by JVCKENWOOD Corporation. ●Company names and product names are the registered trademarks of the respective companies. ●Product specifications and appearance are subject to change without notice. ●Colors in photographs may differ from actual colors due to the printing process. ●Images on screens are simulated.



Safety Precautions

- Please read the user's manual for safe and proper use.
- Do not expose the product to dust, moisture, steam, or oily smoke. It could cause fire, electric shock, or a failure.

Please contact our distributor below with inquiries and orders.

Healthcare Business Operation
Professional Systems Segment
JVCKENWOOD Corporation
3-12, Moriya-cho, Kanagawa-ku, Yokohama-shi, Kanagawa, 221-0022, Japan
TEL: +81-45-450-1908 FAX: +81-45-450-1926
E mail : medical-display.j@jvckenwood.com

JVCKENWOOD
creates excitement & peace of mind

Effective October 1, 2011, JVCKENWOOD Corporation merged with three companies, Victor Company of Japan, Ltd., Kenwood Corporation and J&K Car Electronics Corporation. Under the Corporate Vision "Creating excitement and peace of mind for the people of the world", we will focus on our image technologies, acoustic technologies, radio equipment, and audio and visual software, using these as the core of our aims to become a business group whose sound, images, and radio communications products and drivers make communication a reality for the people of the world.